

# PUREAIRO WMDH 25

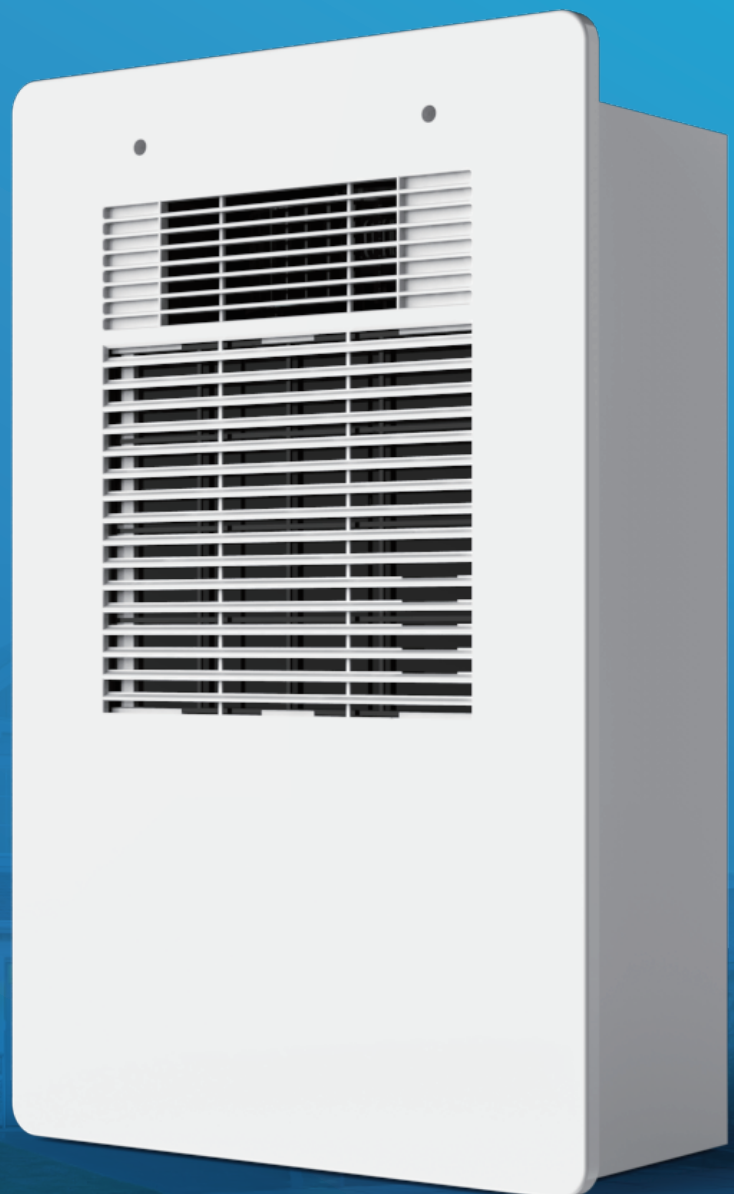
## DESCRIPTION

WMDH by PureAiro is a self-contained, energy efficient dehumidifier that can be installed permanently to interior walls, including masonry or CMU block. Designed to fit between 400 mm wall studs, a single unit controls relative humidity for spaces to 140 square meter and drains directly into a hub drain or plumbing line — eliminating the need for reservoir tanks. The WMDH 25 dehumidification system can be connected to a standard 220V outlet or can be hard-wired. WMDH 25 operates at sound levels lower than 46 dBA, effectively removing excessive moisture without sacrificing comfort or ambiance. This in-wall mounted dehumidifier is suited for both new construction and retrofit installations in multifamily, commercial, educational and industrial applications.

The in-wall WMDH 25 dehumidifier includes: WMDH 25 dehumidifier, 1 in-wall front cover, 1 WMDH 25 washable air filter, 1 drain hose and clamp, 1 power cord, 1 front cover tool, 1 set of tamper resistant screws and 1 Operations Manual.

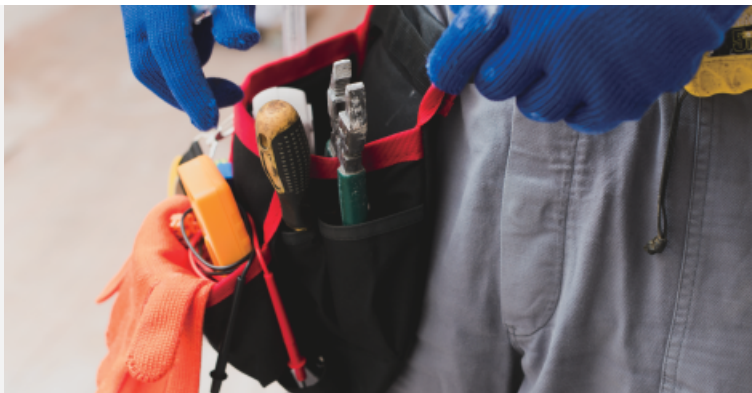
## WMDH 25 Benefits

Is the first in-wall dehumidifier and is available factory direct. Energy consumption – less heat and less energy causes you to save on your electric bills. Dimensions are short enough to install the WMDH 25 unit directly under a typical wall HVAC. It is quiet. Runs at approximately 46 dBA. 11360-14200 millilitre is all you need. More day draw is unnecessary and uses more energy consumption. Large drip pan can accommodate condensation. Installs in the wall between existing studs. Can easily be installed in 60 min. Gravity drains into existing plumbing. Tamper-proof cover gives control to property manager



## PRECAUTIONS

If hard-wired, WDMH 25 should be installed and inspected by a qualified electrician and in accordance with all applicable electrical and plumbing codes. Be certain power is turned off and unplugged or the circuit breaker is off before and during installation and maintenance. Ensure the unit is connected to a wiring system with an equipment-grounding conductor. For stairwells and hallways, ensure the installed unit provides sufficient clearance for pedestrian traffic.



## MINIMAL MAINTENANCE

Scheduled and on-going maintenance is required to ensure peak operating performance.

### MONTHLY:

- Clean or change the air filter  
Filter can be washed with warm water or vacuumed with wet/dry vac.
- Check the relative humidity setting
- Check airways are clean and unblocked

### QUARTERLY (IN ADDITION TO MONTHLY):

- Clean the condensate, pouring a solution of vinegar and water slowly and directly into the drain pan. A 147.9 ml mixture (1 part vinegar and 3 parts water) is normally adequate. Commercial solutions are also available
- Check grill louvers, coil fins and humidistat. As needed, vacuum the grill or wipe with clean soapy water. Wipe the humidistat with a damp

cloth. Vacuum coil fins with a shop vac or spray with a vinegar and water solution. For extremely dirty coils, spray a mild coil cleaner directly on the coils per cleaner recommendations.

- Check the fan blades for dirt build up and vacuum or wipe.

## SPECIFICATIONS

Capacity	up to 27L/DAY
Efficiency	2.20 L/kWh
Noise	46 dB
Spaced For	140 m <sup>2</sup>
Defrosting Control System	Electrical
Functioning Temperature Range	10-35 C
Controls	Digital dehumidistat control internally mounted behind tamper-proof cover
Part Number	WMDH 25
Warranty (see manual)	2 Year Limited Warranty on Parts
Volt Frequency	220 V / 50 Hz
Current Draw	2.5 Amps
Power Consumption	240 Watts @ 30 C / 80% RH
Product	360 x 640 x 220 mm *excludes drain fitting and hose
Grill Cover	437 x 690 x 127 mm
Rough Opening (Installation)	368 x 648 x 248 mm
Weight	16 kg
Shipping Weight	24 kg
Drain Connection	I.D 20mm Hose
Air Filter	Washable
Refrigerant R134A	190G

